



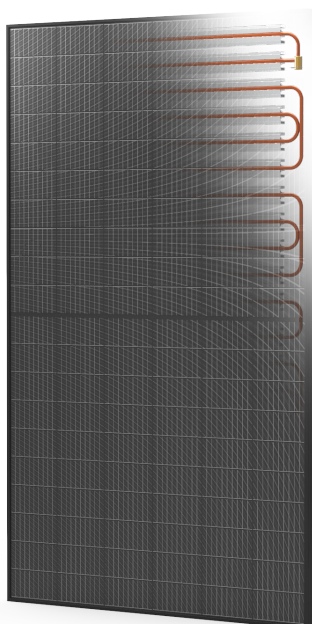
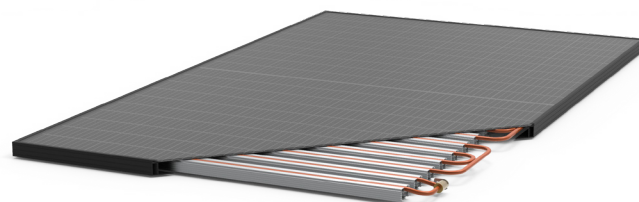
## Next generation PVT panel

The Qpanel is an innovative composition of a Full Black high-quality 370 Wp solar panel with a high-tech thermal collector as a silent source for the heat pump. These two techniques combined is called PV-T (Photo Voltaic Thermal).

With the Qpanel, sustainable electricity and heat are generated in homes and commercial buildings. The Qpanel act as a completely silent source for a heat pump. So no more external unit (vaporizer) with a loud fan that can cause inconvenience.

## Maximum energy

Only 2 Qpanels per kW heat pump output power are required. An average wellinsulated house can be heated with just 10 Qpanels.



### Silent

The Qpanel is a silent source for the heat pump.



### 24/7

Works 24/7, even at night, and generates at any time of the year.



### Heating and cooling

Use the Qpanel to heat and cool the house.



### Maintenance free

The Qpanel requires no maintenance.

## Electricity, heat and cooling in one

The Qpanel generates electricity while the thermal collector at the backside extracts heat from sun and air. Sun, wind or rain, the panel can get energy from it. A big advantage is the Qpanel works 24/7. So even when it is dark or during bad weather conditions with cold, rain and wind.

### Dimensions

Length	1755 mm
Width	1038 mm
Height	35 mm
Surface	1,77 m <sup>2</sup>
Weight	33,7 kg

### Mechanical data PV

Cell	N-type monocrystalline
Cell type	DMPD9B166-223 (1/2)
Cell arrangement	6 x 20
Panel construction	glass/EVA/cells/EVA/backsheet
PV panel classification	2
Glass thickness	3,2 mm
Junction box norm	IP67 / IP68
Cabeling	1100 mm
Cabeling	4 mm <sup>2</sup>
Connector type	MC4 / MC4 compatible
Fire class	C

### Temperature coefficients

Nominal oper. temp.	42 ±3 (NMOT) °C
Temp. coefficient Isc	+0,038 % / °C
Temp. coefficient Voc	-0,270 % / °C
Temp. coefficient Pmax	-0,365 % / °C

### Various specifications

Warranty power output	25 years output 84,8%
Operating temperature	-40 to 85 °C
Max. snow load	5400 Pa
Max. wind load	2400 Pa
Max. system voltage	1000V DC (IEC)
Maximum fuse	20 A
Diodes	3

### Thermal side

Max. working pressure	6 bar
Liquid content	1,6 liter
Liquid	Qfluid
Connection couplings	Easy Quickfit DN12
Connecting hose	RVS flexslang DN12

### Electrical specifications

Panel	DM370M6-60HBB
Pm (W)	370
Tolerance	0-3%
IMP (A)	10,83
VMP (V)	34,17
ISC (A)	11,29
VOC (V)	41,96
Efficiency	20,31%

